



As seen in



# PAPER LANTERN

## SUPPLIES & TOOLS

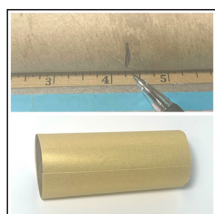
- 4 1/4-in. x 6-in. Clean Empty Paper Towel or Toilet Paper Roll
- 4 1/4-in. x 6-in. Cardstock - Inner Tube Wrap
- 6-in. x 6-in. Cardstock - Outer Split Wrap
- Cording or ribbon for hanger and bottom dangles
- Beads or embellishments to add to the bottom dangle
- 1/4-in. Double Stick Tape #30013284
- Ruler and pencil
- Scissors
- Paper Trimmer\*

**NOTE:** You can use the Paper Trimmer to cut the slits in the Outer wrap piece. Some trimmers that are good for this are the Fiskars Sur Cut and the Tim Holtz Precision Trimmer. These two trimmers work well because there are guides to help you cut and stop at the measurement you want.

The sample shown used crochet thread for the hanger and dangle.

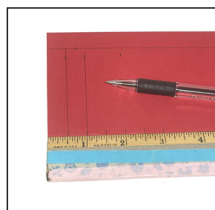


## INSTRUCTIONS



1. If you are using a paper towel roll, measure down to 4 1/4-in. length and cut.

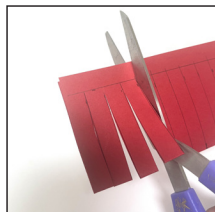
Take the 4 1/4-in. cardstock and wrap around the tube, use double stick tape to hold in place. Set tube aside for now.



2. Take the 6-in. x 6-in. cardstock and fold in half.

Along the folded edge, measure 1/2-in. increments across the 6-in. length stopping 1/2-inch from the open edges.

**NOTE:** If you are using a paper trimmer, skip this step and go to step #4.



3. Use the scissors to cut on the lines. Cut from the folded edge through both thicknesses, making sure to stop 1/2-inch away from the open edges.



4. You can also use a paper trimmer to cut the slits if there are measuring guides on the trimmer blade so you can stop at the 1/2-in. mark. Using the trimmer, you don't have to mark the cardstock and just use the trimmer markings.

Place the folded edge along the trimmer edge. Slide the cardstock over every 1/2-in. Slide the blade to cut the slit, stopping 1/2-inch from the open edge of cardstock at the top.



5. Unfold the slit cardstock. On one end, place double stick tape on the last 1/2-in. section. But keep the protective liner on.



6. Turn the piece over and place double stick tape along the 6-in. edge on the top and bottom, keeping the protective liner on.



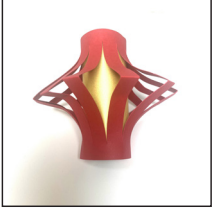
7. Remove the protective lining of the double stick tape on one 6-in. edge only of the slit piece. Wrap the slit piece around one edge of the tube, aligning the edges.



8. Remove the liner from the double stick tape on the last 1/2-in. section. Overlap with the other side and tape the sections together.



## INSTRUCTIONS CONTINUED



9. Carefully remove the protective liner on the other 6-in. side. Slide the piece down to match up to the tube edge.

The slit sections should bough out to create the lantern look.



10. Cut cording to the desired length for the hanger. Punch holes at the top edge to tie cording on or tape/glue ends of the cording to the inside of the tube.

Take another length of cording and have it come down the middle of the tube and out the bottom. Tie beads or other embellishments to create the dangle at the bottom.