



As seen in



# Ben Franklin Crafts®

## KIMONO GIRL TREAT BOX

### SUPPLIES & TOOLS

- Pocky/Pretz Box – 2 pack box is 3 1/2" x 6 3/8", approx. 7/8" wide\*
- 1 pc. of 6 3/8" x 11" Cardstock – printed or solid for Kimono for Pocky Box\*
- 1 pc. of 2" x 3 1/2" Cardstock – matching print for Kimono for box top
- 2 pcs. of 2 1/2" x 6" Cardstock- matching for Kimono Sleeves
- 2 pcs. of 3/8" x 5" Cardstock – contrasting for Kimono Neckline
- 1pc. of 1 1/2" x 11" Cardstock – contrasting for Obi
- 1 pc. of 4" x 4" Cream/Beige Cardstock for the Face
- 1 pc. of 2" x 3 1/2" Cream/Beige Cardstock for the Neckline
- 1 pc. of 5" x 5" Black Cardstock for Hair Front
- 1pc. 3" x 5" Black Cardstock for Hair Back
- 36" of 7/8" Sheer Satin-Edge Ribbon for Obi bow
- 1/4" Double Stick Tape #30013284
- Sharpie Black Fine Tip Marker #91029
- Pink Colored Pencil or chalk for Blush
- Embellishments – ribbon, flowers, beads, buttons, etc.
- 5/8" Velcro Dots – Self Adhesive #5466180
- Pencil/pen for tracing
- We R Score Board #30195075
- Scissors
- Paper trimmer #30088131
- Low temp Glue Gun & Glue Sticks



- NOTE**
- Before decorating the Pocky Box, open the box from the top flap and remove the packs of Pocky Sticks.
  - If you don't have a Pocky Box, you can make this into a Treat Bag. **For the bag you will need the Kimono Cardstock piece to be one inch longer so cut it 7 3/8" x 11" Cardstock -printed or solid for Kimono.**

### INSTRUCTIONS

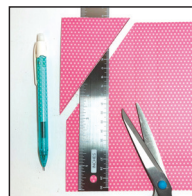


1. Use the 2" x 3 1/2" kimono print cardstock piece to cover the top of the box. Align the piece with the front top edge and fold over to the back of the box. Crease the fold well. Tape to the box and set aside.



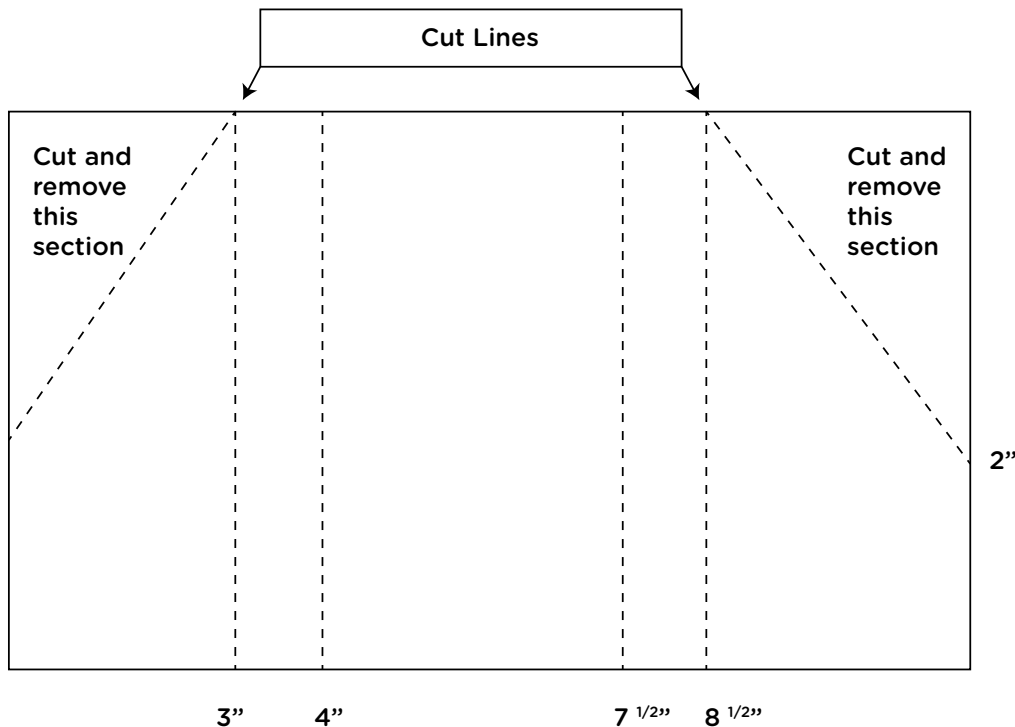
2. With the printed right side down, take the 6 3/8" x 11" cardstock and place on the score board with the 11" edge aligned to the top edge.

Score at these points, starting from the left edge: 3", 4", 7 1/2" and 8 1/2".



3. Measure 2" up from the bottom edge on the right side and mark with a pencil. Draw a line from the top of the right scored line (8 1/2") to this point. Cut the triangular piece off. Do the same on the left side edge.

Cut Lines



With the Kimono 6 3/8" x 11" cardstock, going right to left, score at 3", 4", 7 1/2", and 8 1/2".





## INSTRUCTIONS CONTINUED



4. Crease at the scored lines. Wrap around the box with the 2 1/2" section on the left overlapping onto the top of the right side. Tape in place.



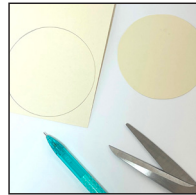
5. Tape the 3/8" strips along the angled edges to create the neckline trim. Cut off excess at the top and bottom of the trim.



6. Take the 1 1/2" strip of cardstock for the obi and wrap around the box with the ends overlapping at the back. Tape the overlapped ends down.



7. Take the 2" x 3 1/2" cream/beige cardstock and slide this piece under the kimono neckline and tape in place to cover the box front.



8. Trace and cut out a 3" circle from the 4" x 4" cream/beige cardstock for the face.



9. Trace and cut out the hair front pattern from the 5" x 5" black cardstock. Place the face behind the hair piece and tape in place from the backside.



10. Use the black marker to draw the eyes onto the face. Use pink chalk/pencil to add light pink circles for blush cheeks. Tape the head/face to the front flap of the box, just above the kimono neckline.



11. Place the 3" x 5" black cardstock behind the head aligning with the top. Tape in place. Trim excess off by following the hair front as a guide.



12. Tape the head/face to the front flap of the box, just above the kimono neckline. To keep the box closed, you can add an adhesive Velcro dot under the flap.



13. Sleeves - Take each of the 2 1/2" x 6" Cardstock and score 3/8" in from one of the 6" edges.



14. Option 1 - 3D sleeves for the sides of the body - Carefully fold the pieces in half without creasing the center fold. Snip at the center to the 1/4" scored line.



15. Overlap the 3/8" sections and glue together using the glue gun. This creates a thin side panel. Trim excess from the 3/8" sections overlap at the top curve.



16. On the opposite edge, glue the edges together 1" from the bottom open ends. Curve cut the corner.



17. Option 2 - Flat sleeves in front - Take the 2 1/2" x 6" cardstocks for the sleeves and fold flat in half, tucking in the 3/8" scored edge and glue together.

Glue the opposite end 1" up from the bottom and curve cut the corner.



18. Use the glue gun to attach the sleeves to the body. Glue the 3D sleeves to the side of the body and the flat sleeves in the front of the kimono. You can make both sleeves the same or use one of each.



19. Finishing touches - Make a 4-loop ribbon bow and glue to the back of the obi.



20. Glue a bow and/or flowers to the hair. Use origami paper to make a fan and glue to the end of a sleeve.

Fill with treats, gift card etc. if the box is empty.





**PATTERNS**

