



PAPER PINEAPPLE FAVOR

SUPPLIES & TOOLS

- 48 pieces of 1" x 2" Yellow Construction paper #30209401
- 2 pieces of 12" x 12" Green Tissue paper
- Clean & Empty Toilet Paper/Paper Towel roll
- Tacky Glue #1360916
- Ruler
- Scissors
- Paper Trimmer #30088131
- Wrapped candy/treats



INSTRUCTIONS



1. Cut at least 48 pieces of 1" x 2" yellow paper. Fold each end of yellow paper down to make a triangular point. The top edge should meet in the center.

NOTE: Depending on what you use for the base, you may need more or less pieces.



2. Spread a thin layer of Tacky glue onto the triangle, from the bottom to halfway to the top.



3. Glue the first triangle onto the top of the roll. Place the triangle about halfway over the top of the roll.



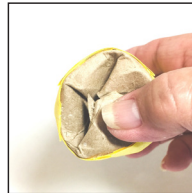
4. Glue the second triangle by overlapping at the bottom from the midpoint of the first triangle. Repeat, adding triangles until you complete the first row. It should be about 6 triangles per row.



5. Start the second row by gluing the triangle point between the two triangles on the row above.



6. Continue layering pieces and making rows. Make about 8 rows, which should leave about 3/4" left of the roll at the bottom.



7. Push the bottom in to form a closure.



8. Take one or two pieces of green tissue paper and wrap your treats along one edge. Twist the other end and place inside of the tube. Fluff the tissue coming out the top and trim into spiky leaves.



Finished sample.

