



As seen in



Ben Franklin Crafts®

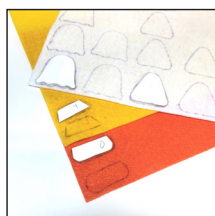
HALLOWEEN TIC TAC TOE

SUPPLIES & TOOLS

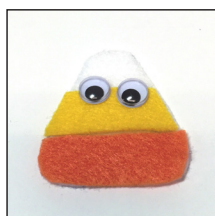
- 9" x 12" Black felt #77676643
- 9" x 12" White felt #77676635
- 9" x 12" Orange felt #30061435
- 9" x 12" Yellow felt #77676676
- 24 qty. 10mm Moving eyes #30055157
- 4 pieces of 10" length of ribbon for game board lines
- Tacky Glue #1360916 or low temp glue gun & glue sticks
- Scissors
- Ruler
- Black Fine Pt. Sharpie marker #91029



INSTRUCTIONS



1. Trace and cut out pieces from felt according to the patterns.

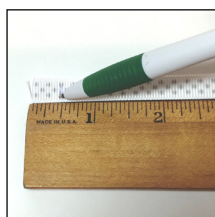


2. Candy Corn - Place the orange felt at the bottom of the white felt and glue in place. Next, place the yellow layer above the orange on the candy corn base and glue in place.

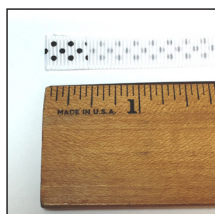


Add two eyes to the white section of the candy corn. Draw a mouth using the black Sharpie marker if you want. Repeat steps to make five more candy corn.

3. Ghost - Glue two eyes onto the ghost piece. Draw a mouth using the black Sharpie marker if you want. Repeat and make 5 more ghosts.



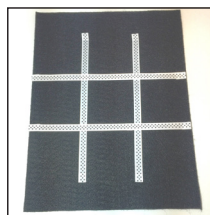
4. Game Board - Take the 10" ribbon lengths. Measure in 1/2" from each end on the backside of the ribbon and mark.



5. Fold the ends of the ribbon to the back at the 1/2" mark and glue in place, making them 9" long.



6. Place the black felt piece in front of you with the 9" edge on the top. From the top of the felt, measure down 1 1/2" and 3" in from the left edge. Lay a 9" ribbon on the felt vertically going down and glue in place. Now measure in 3" from the right edge and place another ribbon on the felt vertically, glue in place.



7. Measure down 4 1/2" from the top and place one of the 9" ribbons horizontally across the felt. Glue in place. Measure down another 3" and lay another 9" ribbon length and glue in place.



8. How to play - Use the Candy Corn and Ghost as your Xs and Os to play tic tac toe.

PATTERNS

