

FREE
PROJECT
SHEET

HM HouseMart

Ben Franklin Crafts®

KEKIKRAFT

FELT MUSUBI ORNAMENT/PIN

SUPPLIES

- 2 pieces of 3 in. x 3 in. Black Felt
- 2-1/2 in. x 2-1/2 in. White Felt
- 1/2 in. Red Pom Pom
- Low Temp Glue Gun & Glue Sticks or Tacky Glue

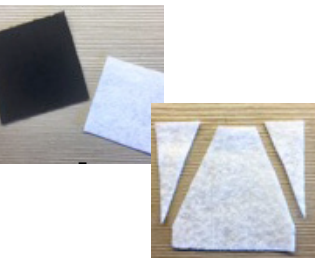
TOOLS

- Scissors

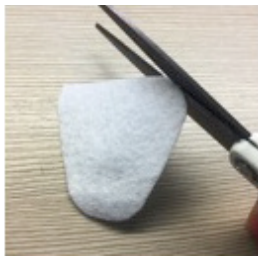
DECORATIONS

- 3/8 in. Jingle Bells
- Chenille Stems (brown or gold)
- 3/8 in. Ribbon
- 12 in. length of 1-1/2 in. Wired Ribbon
- Pin Back

INSTRUCTIONS



1. Take the white 2 in. x 2 in. felt square and trim the sides as shown to create a triangular shape.



2. Round the top and bottom two corners.



3. Your rounded triangle in white felt is the "rice" of the musubi.



4. Place the white piece onto one of the black felt squares. Using the white as a guide, trim around leaving about 1/4 in. black edge.

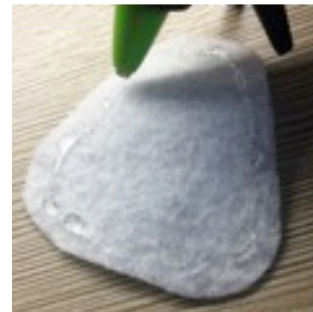


5. Cut the other black felt piece to match the first. These are the musubi "nori".



HM HouseMart
Ben Franklin Crafts®

INSTRUCTIONS CONTINUED



6. Add glue around the edges of the white felt using a low temp glue gun or tacky glue. (NOTE: tacky glue will take longer to adhere and dry)



7. Glue the white piece onto one of the black triangles. Glue on a red 1/2 in. pom pom in the center for an "ume" nose.



8. For a reindeer, cut a brown chenille stem in half, twist each piece into a 3 stem antler.



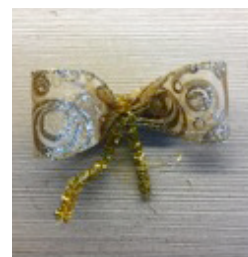
9. Tie the ends of an 8 in. length of ribbon together to make a hanger. Glue the antlers and ribbon hanger to the second black triangle. (NOTE: leave the ribbon hanger off if you are making a pin to wear)



10. Glue the first black piece with the white center onto the antler piece. Glue a small bow and 3/8 in. jingle bell to the bottom to finish.



11. For an angel, take a gold tinsel stem, cut in half. Twist one piece into a loop halo.



12. Take 12 in. of 1-1/2 in. wide wired ribbon and fold in two loops with the ends meeting in the middle. Use the other piece of tinsel stem to twist together at the center to create a bow for the "wings".



13. Like the reindeer, glue the halo to the second black felt. Glue the two black felt pieces together. Glue the bow to the back for the wings. Finishing: Glue a ribbon hanger for an ornament or glue a pin back behind to wear.