



HEARTYTM FIVE PETAL FLOWER

SUPPLIES:

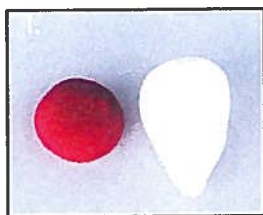
- Hearty[®] clay, choice of color
- Clay scissors
- Flower Shaping tool 2 pc set

Optional:

- Color Scale
- Cling wrap or
- Resealable plastic bag



INSTRUCTIONS:



1. Form a 3/4" ball with the first color clay and slightly flatten the ball. Shape the second color clay into a cone shape (3/4" w x 1 1/2" h).



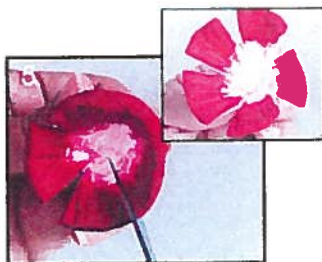
2. Place the round flattened clay on top of the cone.



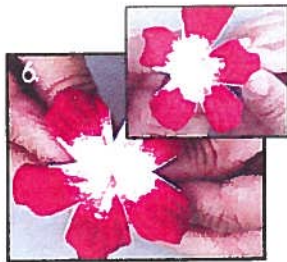
3. Insert smaller end of the flower tool into the flattened end of the cone.



4. Roll tool around the inside of the cone to spread the clay.



5. Use scissors to cut five petals into the cone about 1/3 of the way down.



6. Shape each petal as desired and spread out in floral design.

No portion of design or written instructions may be reproduced in any form. The information on this instruction sheet has been tested and is presented in good faith, but no warranty is given, nor are results guaranteed. Claycompany.com disclaims all liability from any injury or unsatisfactory results. Warning: Due to the components used in this craft, children under 5 years of age should not have access to materials or supplies.