



HM HouseMart
Ben Franklin Crafts
T-LITE CAKE

As seen in
M
 MrWeek

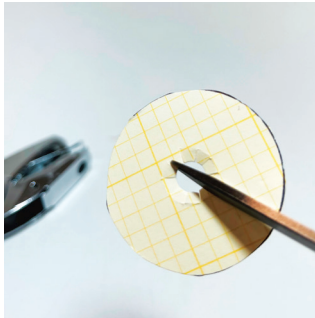
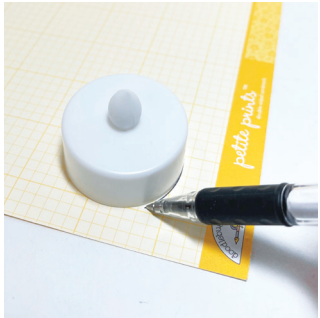
MATERIALS & TOOLS

- T-Lite candle - battery operated #30184453
- 2 1/2" x 2 1/2" Cardstock for cake top
- 1 1/2" x 5 1/2" Cardstock for side wrap
- Cardstock for bottom "doily"- approximately 3" circle
- Small embellishments for decorating - buttons, flowers, ribbon, beads, sequins, etc.
- 1/4" Double Stick tape #30013284
- Low temp Glue Gun & Glue sticks
- Scissors - fine tip for snipping recommended
- 1/4" Hole Punch #77178558
- Pencil/pen for tracing
- 30" of 3/8" sheer stain edge ribbon or similar
- Sewing thread and needle
- **Optional** - circle punches can be used instead of tracing and cutting out circles.



NOTE: Adjust cardstock measurement to fit the size of your battery-operated t-lite candle

INSTRUCTIONS

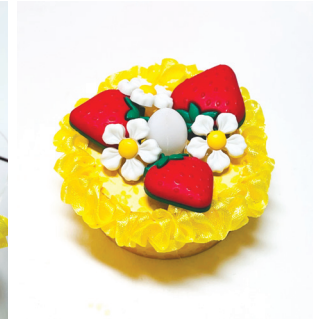


1. Take the T-lite candle and place it onto the cardstock for the cake top with the wrong side facing up. Use the pencil/pen to trace around the bottom. Cut out the circle.

2. Use the 1/4" hole punch and make a hole in the center of the circle. Make small snips around the punched-out hole.

3. Use double stick tape and adhere the circle, right side up, onto the candle top, with the "flame" coming through the punched hole. Take the strip of cardstock for the sides and tape around the candle.

INSTRUCTIONS (Continued)



4. To make the "icing" along the edge: Take 30" of 3/8" sheer satin ribbon. Thread your needle and knot one end. Sew a running stitch down the middle to gather the ribbon to ruffle.

5. Glue the ruffle along the top edge of the candle for the "icing". Decorate the top of the cake with mini flowers, beads, buttons, etc.

6. Take a larger cardstock circle and center the cake on top. On the bottom, mark where the light switch is and punch a hole for the light switch to come through. Center the cake and tape to the circle.



7. Switch the T-lite on. You can make a small stand or box to place the cake in for presentation.