

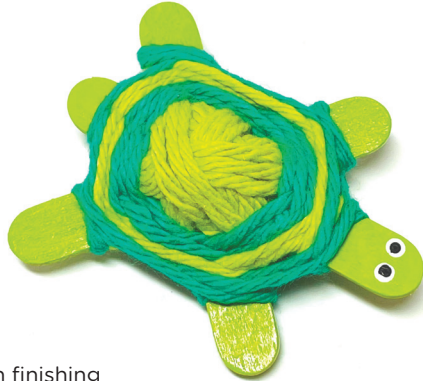


HM HouseMart
Ben Franklin Crafts
TURTLE CHARM

As seen in
M MiniWeek

MATERIALS & TOOLS

- 3 qty. Mini Crafts Sticks 2.6" #30160139
- Two or more colors of:
 - Yarn or Embroidery Floss - Green
 - Yarn or Embroidery Floss - Med. Green
 - Yarn or Embroidery Floss - Lt. Green
 - Yarn or Embroidery Floss - Tan Brown
- Green or Lt. Brown Acrylic Paint
- White Acrylic Paint
- Black Acrylic Paint
- Clear Acrylic Varnish
- Low Temp Glue Gun & Glue Sticks
- Scissors
- Small paint brush
- 3" x 3" Green or brown felt - for underneath finishing
- **Finishing Options** - Magnets, keychain, pin backs, etc.



NOTE: Sample shown used Sugar 'n Cream yarns

INSTRUCTIONS



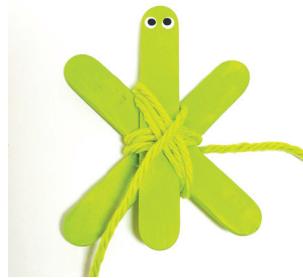
1. Paint three mini craft sticks with the green or brown acrylic paint, painting both sides and the edges. Let dry.

Dip the end of the thin paintbrush in white acrylic paint and make two dots for the eyes on one end of one painted craft stick. Let dry. Make a small dot with the black paint to finish the eyes. Let dry.



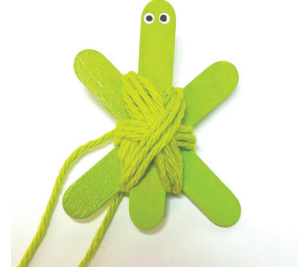
2. Coat all painted sticks with a clear acrylic varnish. Let dry.

Arrange the three craft sticks as shown. Two forming an "X". The third stick with the eyes goes straight on top in the middle. Let the end with the eyes stick out a little more. Use a glue gun to glue the stick together in the center to make it easier to weave around.



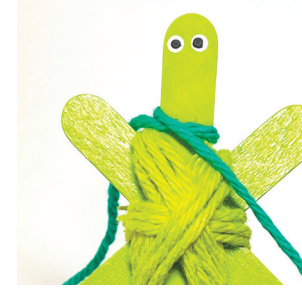
3. **Shell Center** - Take the first color of yarn or floss and wrap over the sticks, going across the center. Wrap around three times, then move to the space in between the next sticks and repeat.

INSTRUCTIONS (Continued)



4. Make sure the center is evenly and completely covered. Knot the ends of the yarn together underneath and trim off the excess.

You can add more layers if you want the center of the shell to be higher.

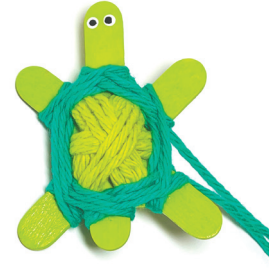


5. **Weaving Outer Shell** - Start with the yarn coming up from below in between two sticks, place the yarn over the stick to the right and wrap around once.

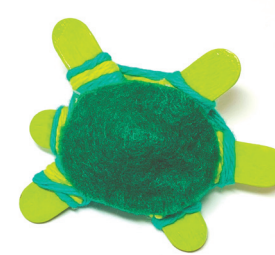


6. Going clockwise, move to the next stick on the right and wrap around once. Repeat these steps until you have completely gone around once.

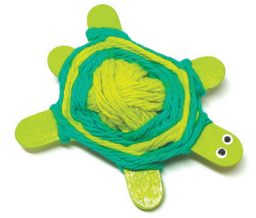
Repeat two more times. Tie off underneath.



7. Change the yarn color and repeat steps 5 and 6. You can change the number of times you wrap around before changing yarn colors to create a design you are happy with for the turtle's shell.



8. Create a nice finish by cutting a circle of felt and gluing to the bottom to hide all the knotted ends.



9. Use your turtle as a charm by hooking on a strap or keychain. Or add a magnet to the bottom.

You can also use it to decorate a gift, attach to lei or hang as an ornament for Christmas.

Lots of different ways to use this turtle charm!